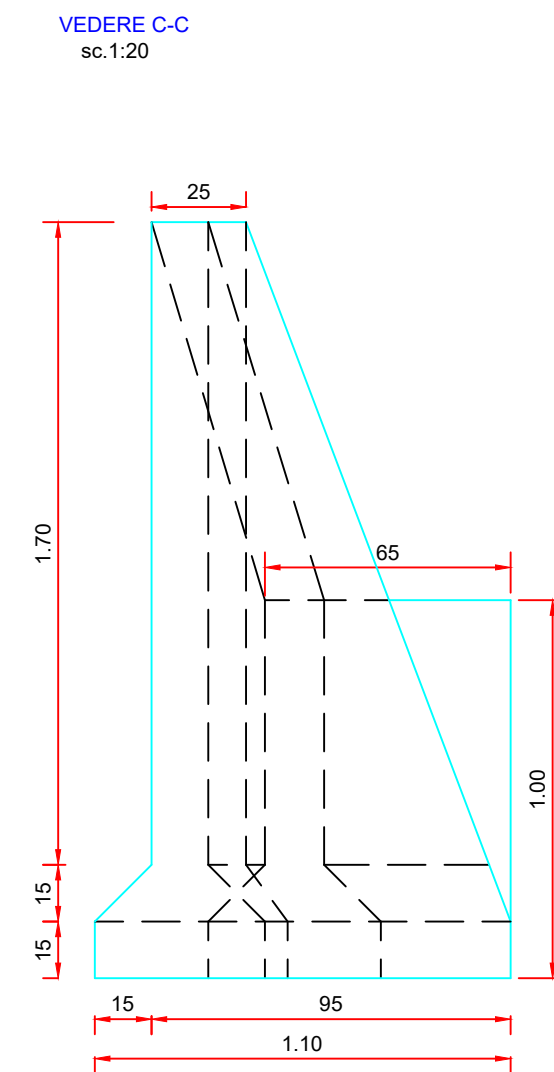
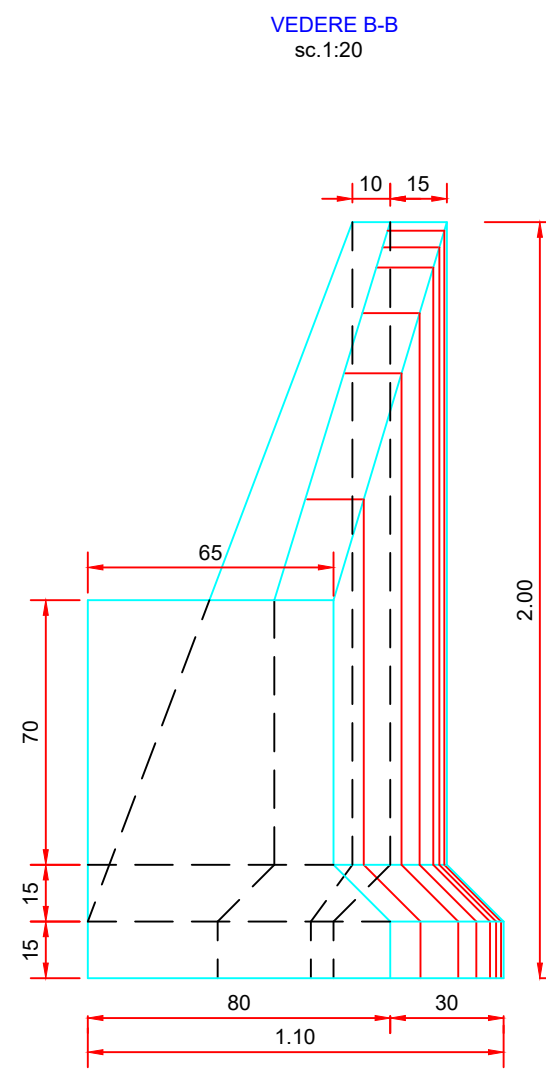
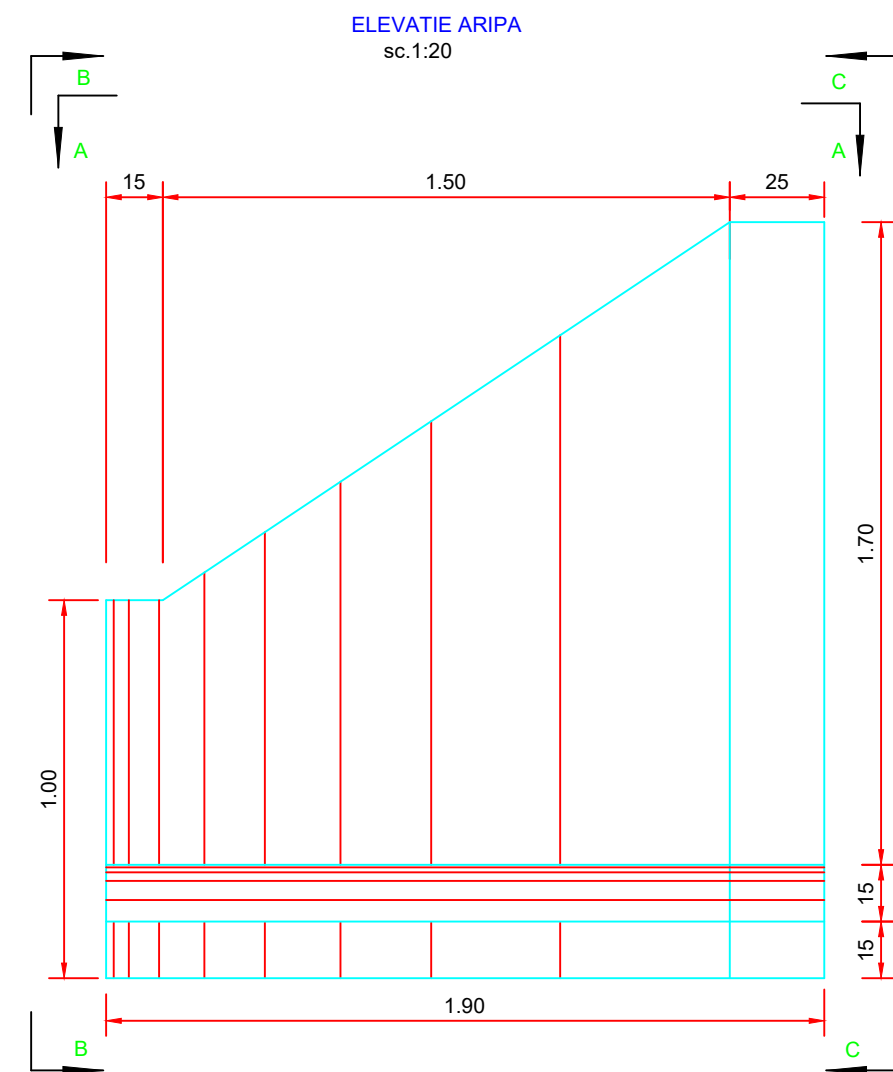
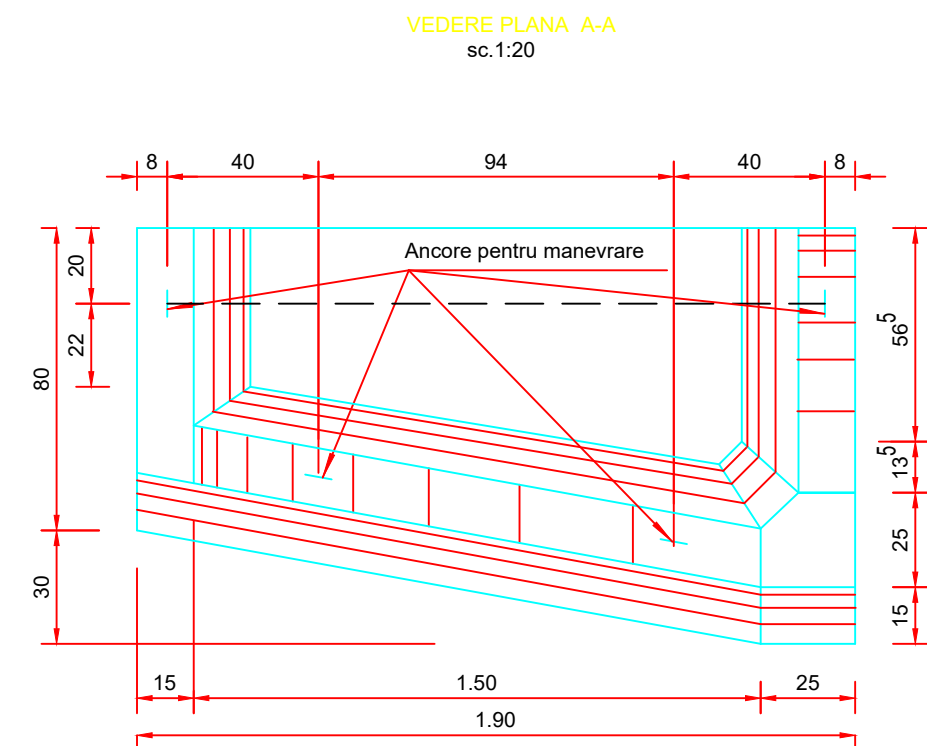


PLAN DE COFRAJ ARIPIA PREFABRICATA TIP AC

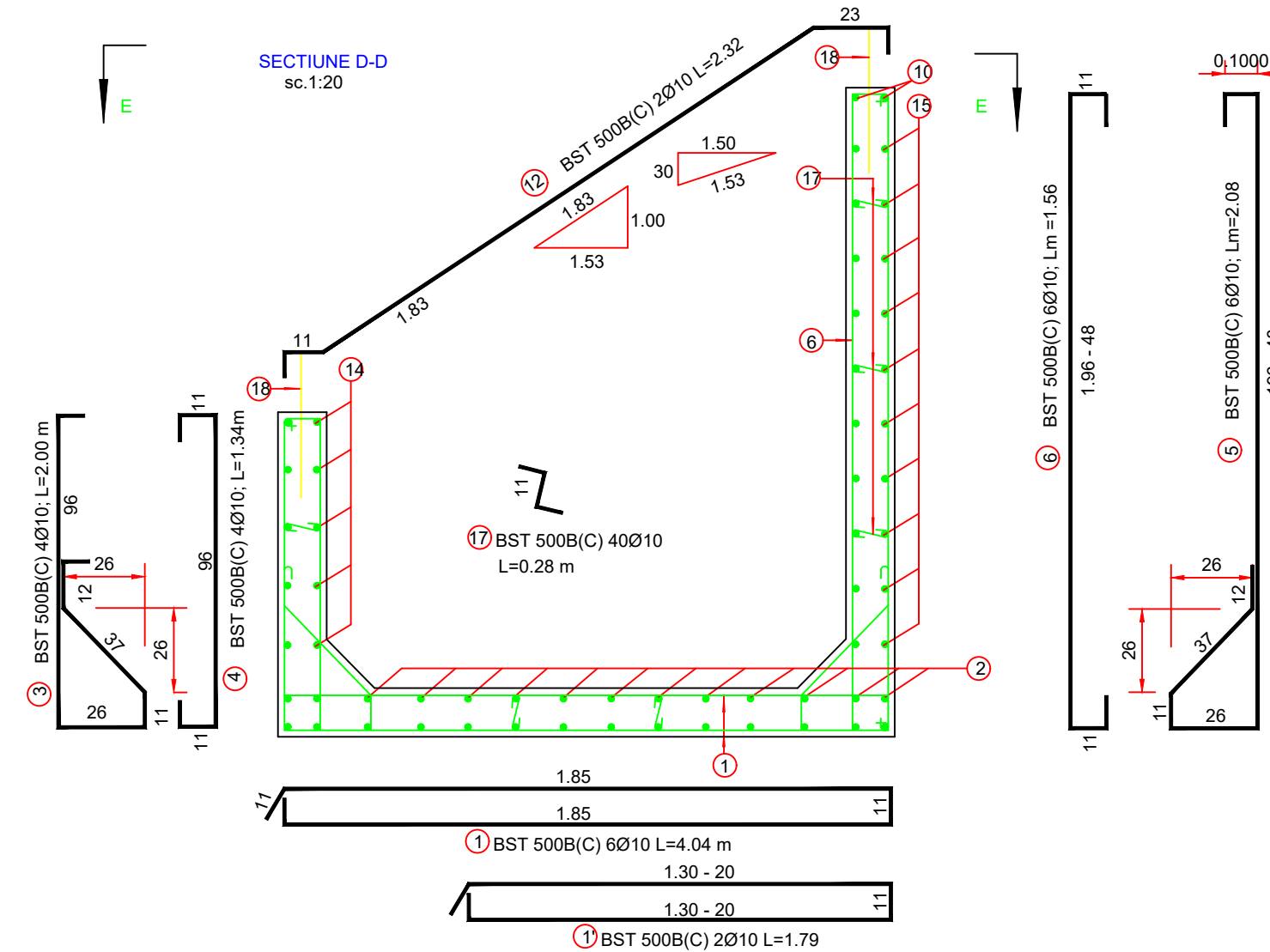


NOTA:

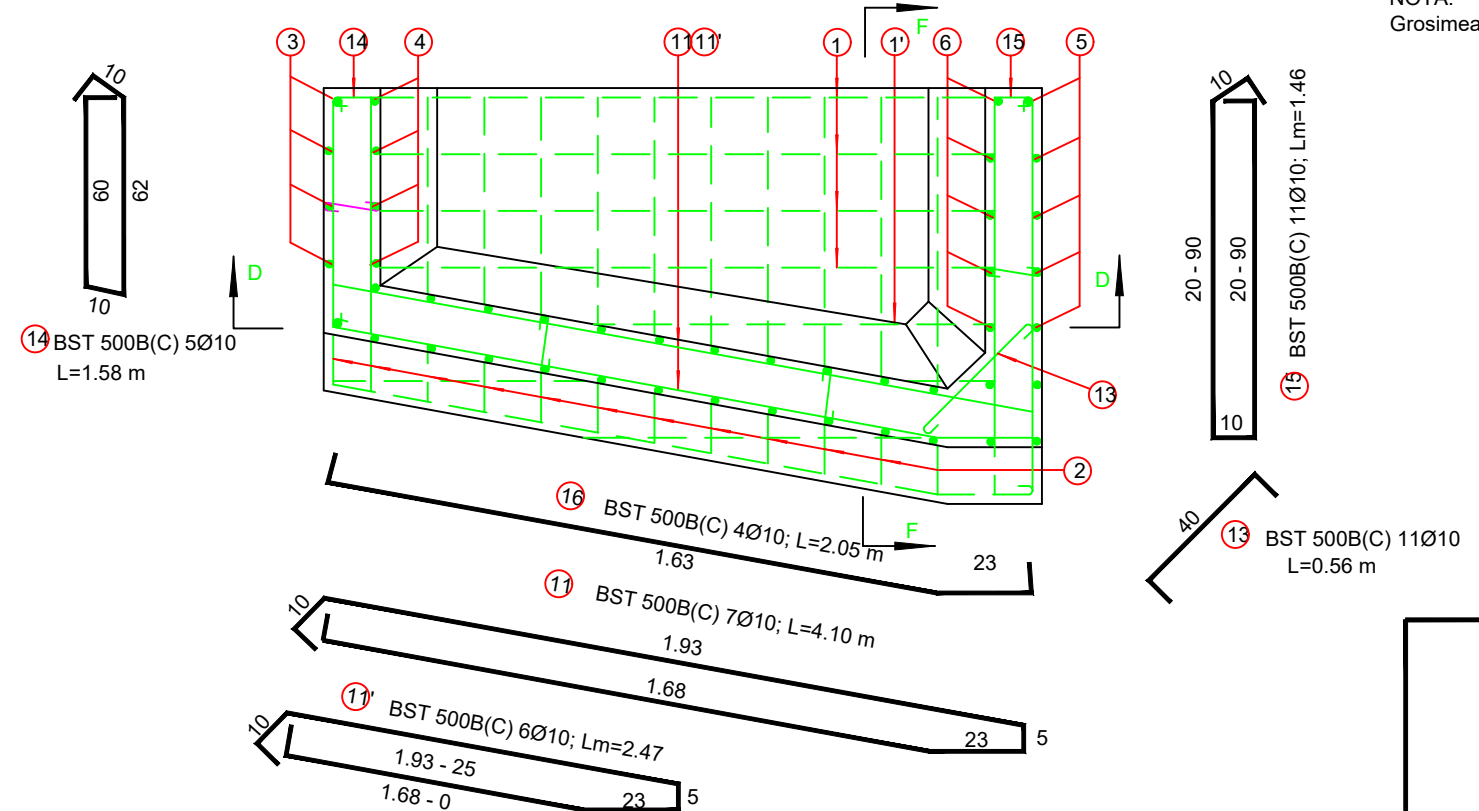
1. Fetele interioare ale peretilor si fata superioara a placii se izoleaza pe santier cu suspensie de bitum flielizat.
2. Pentru manevrare si montare se folosesc cele 4 ancore Ø14.
3. Aripa se aseaza pe blocul de fundatie avand suprafata de beton nivelata pe un strat proaspat de mortar M100 de 1 cm. grosime.
4. Clasa de precizie CP. 8.



PLAN DE ARMARE ARIPIA PREFABRICATA TIP AC

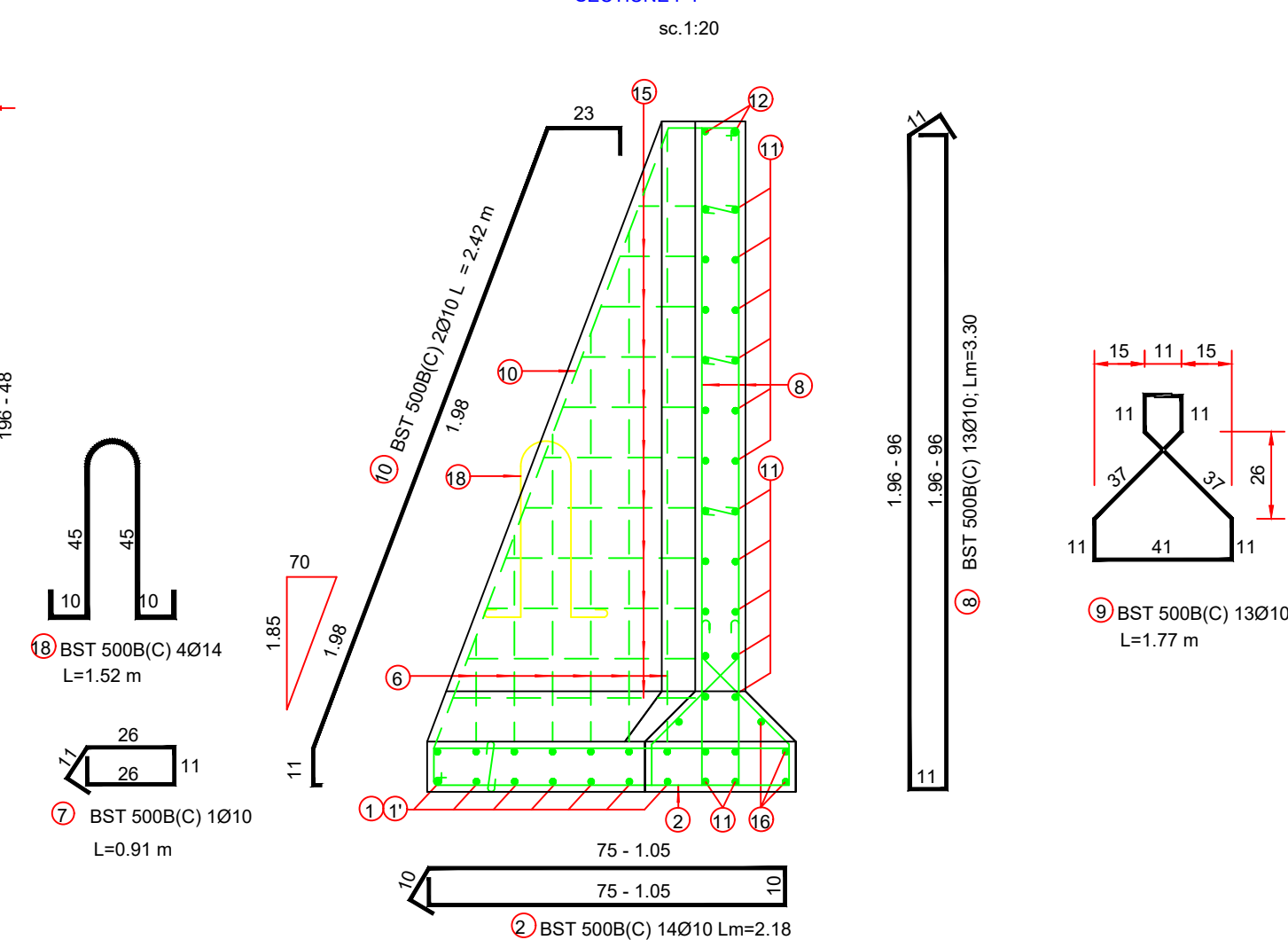


SECTIUNE E-E
sc.1:20

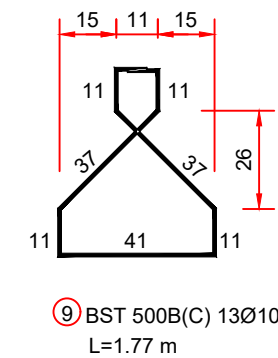


NOTA:
Grosimea minima a stratului de beton prntru acoperirea armaturilor este de 2 cm.

SECTIUNE F-F



Beton	C30/37	0.95 mc
Otel	BST 500B(C)	170.66 kg
Cofraj		10.9 mp
Greutate		2.46 t






EXTRAS DE ARMATURA ARIPIA PREFABRICATA TIP A0					
					LUNGIMI(m)/DIAMETRI BST 5008(C)
MARCA	DIAMETRU	N.R. BUCATI	LUNGIME(m)/BUCATA	#/20	#/3
1	10	6	4.04	24.24	
2	10	2	1.79	3.58	
1'	10	14	2.18	30.52	
3	10	4	2.00	8	
4	10	4	1.34	5.36	
5	10	6	2.3	13.8	
6	10	6	1.64	9.84	
7	10	1	0.91	0.91	
8	10	13	3.3	42.9	
9	10	13	1.77	23.01	
10	10	2	2.42	4.84	
11	10	7	4.1	28.7	
11'	10	6	2.47	14.82	
12	10	2	2.32	4.64	
13	10	11	0.56	6.18	
14	10	5	1.58	7.9	
15	10	11	1.46	16.06	
16	10	4	2.05	8.2	
17	10	40	0.28	11.2	
18	10	2	1.52		6.08
LUNGIMI TOTALE(m)				264.68	6.08
				0.62	1.21
				163.31	7.36
TOTALA				170.66	

Caracteristicile betoanelor utilizate pentru
elemente prefabricate de podete:
Referinta la normativul NE 012-1:2007/standardul SR EN 206-1

- Clasa de rezistentă la compresiune	C30/37
- Clasele de expunere (min)	XC4+XD1+XF4
- Dozaj minim de ciment (min)	340 kg/mc
- Tip ciment conf. SR EN 197-1:2002	CEM I; SRI; I-A 52,5, 42,5; CEM II: A/B-S, IIIA-S, A-LL;
- Raport apă/ciment (max)	0.5



<div></div> <div>INVESTITOR</div> <div>COMPANIA NATIONALA DE ADMINISTRARE A INFRASTRUCTURII RUTIERE S.A.</div>	<div>PROIECTANT GENERAL</div> <div></div> <div>THE WAY TO DATA BEYOND THE LIMITS D P CONSULT S.A.</div>	<div></div> <div>AMPLASAMENT</div>	<div>DENUMIRE PROIECT</div> <div>PROIECTARE SI EXECUTIE</div> <div>"VARIANTA DE OCOLIRE TIMISOARA SUD"</div> <div>ELABORARE PROIECT TEHNIC</div> <div>REST DE EXECUTAT</div>		<div>FAZA PROIECT</div> <div>PROIECT TEHNIC</div> <div>REST DE EXECUTAT</div>		<div>Manager de Proiect</div> <div>ing. Silivan Moldovan</div> <div>Sef Echipa Proiectare</div> <div>ing. Raul Cocis</div> <div>Inginer Proiectant Poduri</div> <div>ing. Attila Takacs</div> <div>Inginer Proiectant Drumuri</div> <div>ing. Valentin Oaida</div>		<div>REVIZII</div> <table><tr><th>NR. REV.</th><th>DATA</th><th>SEM.N.</th></tr><tr><td></td><td></td><td></td></tr></table>			NR. REV.	DATA	SEM.N.				<div>DENUMIRE PLANSA</div> <div>DETALIU</div> <div>PLAN COFRAJ SI ARMARE</div> <div>ARIPA A0</div> <div>Scara : 1:20</div> <div>NUMAR PLANSA</div> <div>556-VOTM-DET-26</div>	
			NR. REV.	DATA	SEM.N.														
			NUMAR CONTRACT : 550/36/09.02.2023		Data : 03.2023		VERIFICATOR TEHNIC												
NUMAR PROIECT : 556																			